

# Russell Muzzleloaders Inc.

## 40<sup>th</sup> Anniversary Annual

### Fall Shoot and Rendezvous

October 18, 19, & 20, 2024



*Rifle ~ Pistol ~ Knife & Hawk Walk*

*Novelty Rifle ~ Shotgun Shoot*

*Primitive Archery*

*Kids BB Gun Shoot*

### *Range Hours*

*Friday Noon - 5:00 PM*

*Saturday 8:00 AM - 4:00 PM*



*Sunday 9:00 AM - Shotgun Shoot*

*All Prizes Awarded Sunday*

### Shooting and Camping

Entry Fees: \$ 20 Individual

\$30 Family Household

NMLRA Rules Will Apply

Club Range Rules Will Take

Precedence Over NMLRA!

Patched Round Ball & Open Sights Only

Shooting from Bag Only

Primitive and Modern Camps Separate

Above Ground Fire Pits or Fire Boxes

Only (Some Fire Rings Provided)

Fire Buckets Required in each Camp

No Loaded fire arms in camps

Traders and Visitors Welcome!

Primitive dress preferred, but not required

All Pets Must Be On A Leash ~ Please!!

### Saturday Night Feed 5:15

Hosted By Club - Side Dishes are Appreciated

### Directions From Russell, Ks.:

8 Miles North on Highway 281

to Beatty Road at mile marker 153

Turn East and Go about 2 Miles to

the east side of the Paradise Creek Bridge.

This is the same location as 2023. Road

Construction on 281 is now Completed.

See attached map

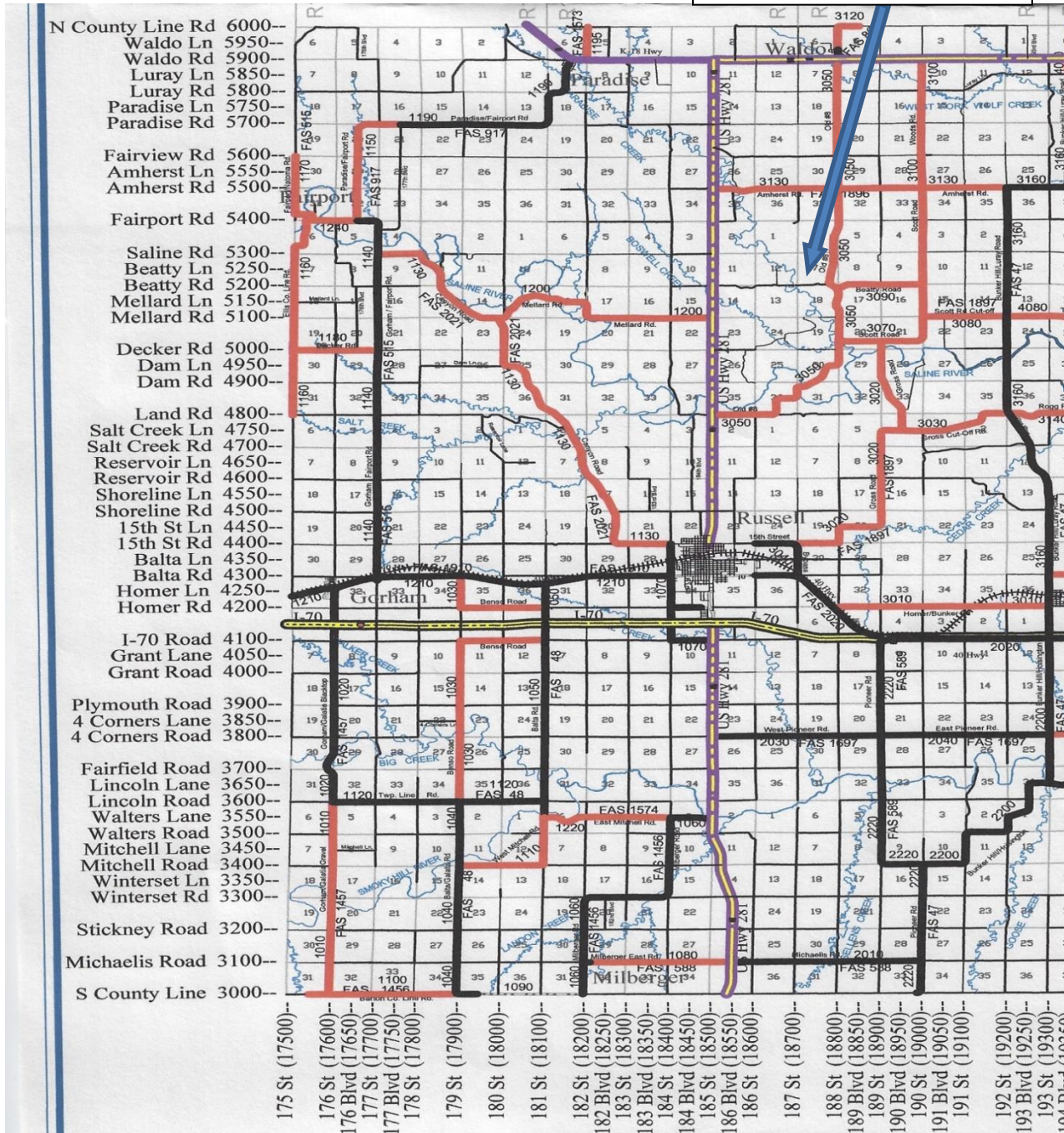
Fire Wood available/No Potable Water

### For More Information Contact:

Sam Schmidt 785-483-7804

Jim Vlcek 785-483-4132

2024 Rendezvous Site



Highway 281 is **Now Open** North of Land Road since Construction has been completed. Exit 281 at Beatty Road (Mile Marker 153) and go East to Rendezvous Site Approximately 2 Miles. Beatty Road is very rough in spots (2 Miles), so drive slower on the gravel road.